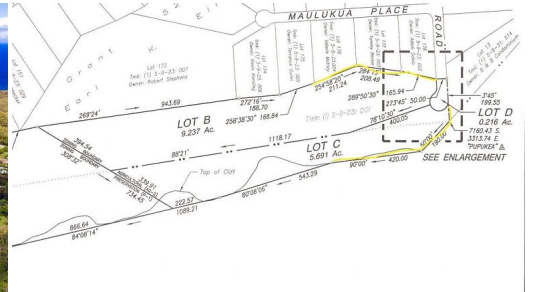




HiCentralMLS



59 Maulukua Road B, C and D

Land for Sale in **North Shore**, Oahu | MLS **202507976**

659,673 **\$4,295,000**
sqft land listing price

Among the last of its kind available, this undeveloped bluff/ridge lot in prestigious Pupukea is a rare opportunity for a discerning buyer. This ridge line, previously protected from development, is available for purchase. Preserve breathtaking ocean and mountain views for generations to come. Privacy is the norm throughout all 15± acres thanks to borders shared with State conservation land in front and Waimea Valley on the west. Tucked between dramatic mountains and views of deep blue waters of the Pacific, this lot is an impeccable blank canvas for your own



HAWAII LIFE

Statewide Customer Support
Offices on All Islands

HawaiiLife.com

(800) 667-5028 call or text

re@HawaiiLife.com email support

Julia Napua Fetzer

REALTOR Broker

(808) 286-7550

julia@hawaiilife.com

Kyle Bernhardt

REALTOR Salesperson

(808) 391-5969

kylebernhardt@hawaiilife.com