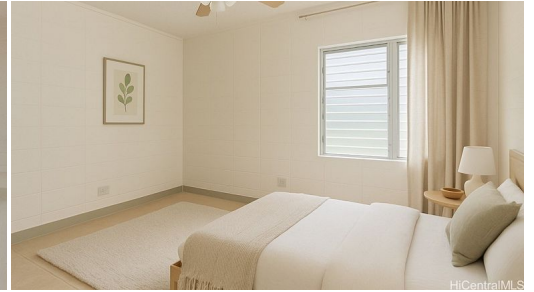




HiCentralMLS



HiCentralMLS

45-535 Luluku Road G2

Condo for Sale in **Kaneohe**, Oahu | MLS **202510277**

125,453 **948** **2** **2** **\$438,000**
sqft land sqft living bedrooms bathrooms listing price

Don't miss this incredible opportunity to own on the Windward Side! Welcome to this ground-floor unit in Na Pali Gardens, located in beautiful Kaneohe. Originally a 3-bedroom, this home has been thoughtfully converted into a spacious 2-bedroom layout, offering a more open and flexible living space. ☒

☒
Enjoy the ease of living with a private, fenced-in grassy area—perfect for morning coffee, gardening, or relaxing outdoors. Take in views of the majestic Ko'olau

Listed by **eXp Realty**



HAWAII LIFE

Statewide Customer Support
Offices on All Islands

HawaiiLife.com

(800) 667-5028 call or text

re@HawaiiLife.com email support