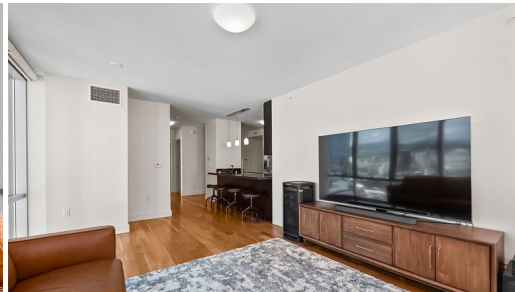




HiCentralMLS



1189 Waimanu Street 2409

Condo for Sale in **Metro**, Oahu | MLS **202524496**

1,089
sqft living

2
bedrooms

2
bathrooms

\$1,088,000
listing price

Welcome to Waihonua #2409! Ideally situated between Ala Moana and Ward Village, this residence offers the perfect blend of luxury and convenience at an attractive price. The spacious floor plan showcases ceiling to floor windows offering breathtaking city and mountain views. Unit features include: central a/c, engineered wood flooring, granite countertops, stainless steel appliances, & TWO prime covered parking stalls along with an overhead storage. Resort like amenities include: 24 hour security, guest parking, infinity pool, jacuzzi, fitness center,

Listed by **Ota Realty Consultants, LLC**



HAWAII LIFE

Statewide Customer Support
Offices on All Islands

HawaiiLife.com

(800) 667-5028 call or text

re@HawaiiLife.com email support