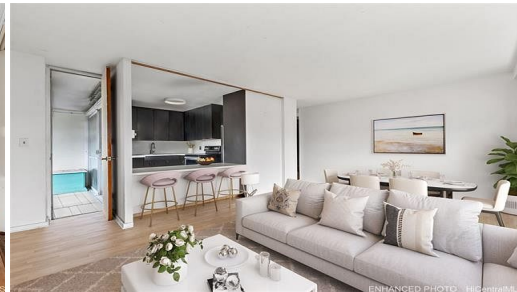




ENHANCED PHOTO HiCentralMLS



HiCentralMLS

1519 Nuuanu Avenue #947

Condo for Sale in **Metro**, Oahu | MLS **202525525**

749 sqft living **2** bedrooms **1** bathrooms **\$349,000** listing price

PREFERRED CORNER/END UNIT WITH 2 COVERED PARKING STALLS! Situated in the heart of Honolulu, don't miss this RARELY AVAILABLE 2 bed/1 bath unit in Queen Emma Gardens. This bright and breezy unit features hardwood flooring, efficient floor plan and additional windows for maximum natural light. Relax on your private lanai and soak in the beautiful city views. Enjoy amazing amenities such as a swimming pool, children's wading pool, Tea Houses, playground, BBQ areas, 24-hr security, and more! Conveniently located near Downtown Honolulu,

Listed by **REMAX Hawaii**



HAWAII LIFE

Statewide Customer Support
Offices on All Islands

HawaiiLife.com

(800) 667-5028 call or text

re@HawaiiLife.com email support