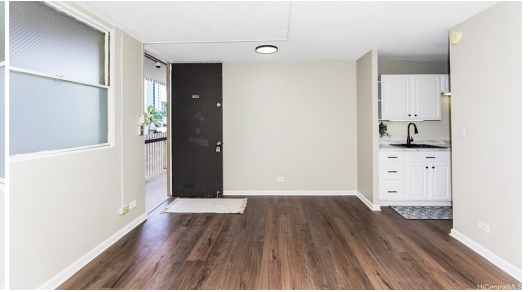




HiCentralMLS



# 1911 Kalakaua Avenue 503

Condo for Sale in **Metro**, Oahu | MLS **202526421**

**11,064** sqft land   **437** sqft living   **1** bedrooms   **1** bathrooms   **\$444,800** listing price

Newly renovated LEGAL VACATION RENTAL at the entrance to Waikiki. Only unit for sale with a dedicated and secure covered PARKING STALL in building parking garage. Beautiful, clean and modern one bedroom, one bathroom facing the entrance to Waikiki. Rarely available with your very own secure assigned parking space. Sit on your private lanai and enjoy the sites of Waikiki. Conveniently located within walking distance of great restaurants, shopping and world famous beaches. This vacation rental is turnkey and the perfect investment opportunity or

Listed by **Pacific International Realty**



## HAWAI'I LIFE

Statewide Customer Support  
Offices on All Islands

**HawaiiLife.com**

**(800) 667-5028** call or text

**re@HawaiiLife.com** email support