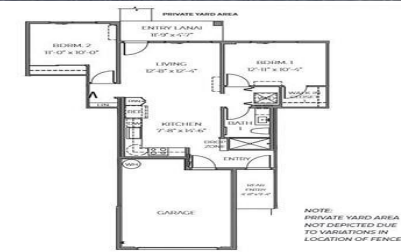




HiCentralMLS



PLAN F103-R/F103 | BUILDING TYPE 3
 846 net living area sq. ft. | 2 bed, 1 bath,
 one-car garage and 1 additional parking stall | 1 story



HiCentralMLS



HiCentralMLS

91-1171 Hoonaauao Street #1202

Condo for Sale in **Ewaplain**, Oahu | MLS **202527987**

846 sqft living
2 bedrooms
1 bathrooms
\$634,045 listing price

This single ground level 2 bedroom, 1 bath condominium flat consists of 846 square feet of net living area. Step in from the entry lanai and enter the open concept living room and kitchen. Off the kitchen is the primary bedroom with a walk-in closet and a nearby bathroom with a vanity sink and walk-in shower. Across the living room, the secondary bedroom has a generously sized closet with mirrored sliding doors. Attached to this home is a single-car garage (also comes with 1 open parking). Air conditioning and modern appliances including a range/

Listed by **D R Horton Hawaii, LLC**



HAWAII LIFE

Statewide Customer Support
 Offices on All Islands

HawaiiLife.com

(800) 667-5028 call or text

re@HawaiiLife.com email support