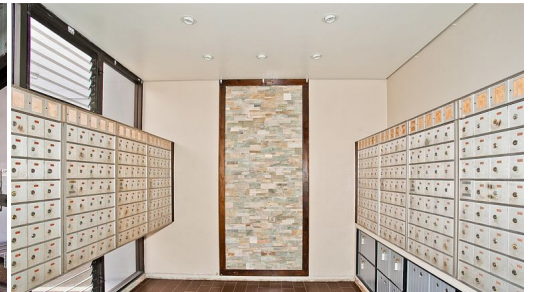




HiCentralMLS



3045 Ala Napuaa Place 302

Condo for Sale in **Metro**, Oahu | MLS **202528372**

396 sqft living
1 bathrooms
\$238,500 listing price

HARBOUR RIDGE - an air conditioned studio condominium located in the Salt Lake/Moanalua area with assigned covered parking in a secure building. Security is present after business hours daily. Conveniently situated near the airport, Hickam AFB, and Pearl Harbor Naval Base with easy access to the freeway heading in all directions, this home can simplify your daily travel routines. Located on a cul-de-sac, the complex offers ample guest parking and no heavy traffic. Own a fee simple studio condominium for under \$300K. Come and see for yourself!

Listed by **Century 21 iProperties Hawaii**



HAWAII'LIFE

Statewide Customer Support
Offices on All Islands

HawaiiLife.com

(800) 667-5028 call or text

re@HawaiiLife.com email support