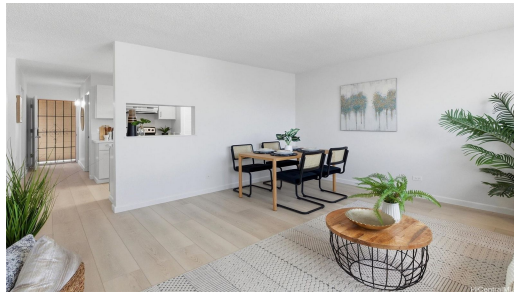




HiCentralMLS



633 Nalanui Street 401

Condo for Sale in **Metro**, Oahu | MLS **202600996**

772 sqft living
3 bedrooms
1 bathrooms
\$399,999 listing price

Exceptional opportunity to own a turnkey 3-bedroom city oasis for under \$400k! Experience urban living in this rarely available, top-floor corner residence at Nalanui Hale in Liliha! Fully, meticulously remodeled in 2025, this stunning, move-in ready home features new luxury vinyl flooring, new contemporary kitchen and bathroom, fresh paint, new window screens and light fixtures, and many more upgrades throughout. Enjoy abundant natural light, cool mountain breezes, and sweeping views of the Honolulu skyline and vibrant sunsets. All-inclusive

Listed by **Locations LLC**



HAWAII' LIFE

Statewide Customer Support
 Offices on All Islands

HawaiiLife.com

(800) 667-5028 call or text

re@HawaiiLife.com email support