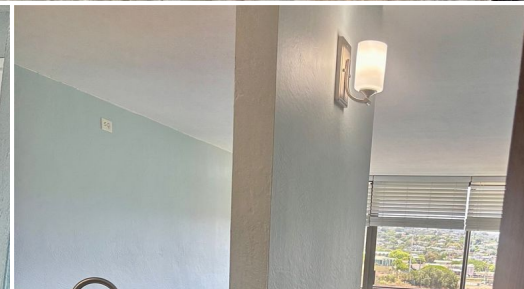
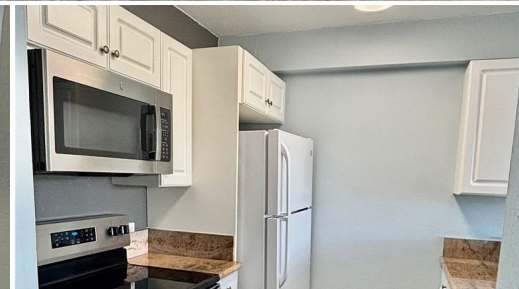




HiCentralMLS



98-500 Koauka Loop 14E

Condo for Sale in **Pearlcity**, Oahu | MLS **202602063**

762 sqft living **1** bedrooms **1** bathrooms **\$345,000** listing price

Excellent location, minutes to Pearl ridge shopping Center, schools, restaurants, Pali Momi Medical Center, Kaiser, Strub, schools, bus stops, entertainment, Down to Earth, Safeway & easy access to freeway with minutes to joint base Pearl Harbor, Hickam, International air port Enjoy weekend farmer's market or Night market at near by shopping center, near Golf course. Secured building with security video & security guard, guest parking, resident manager, basketball court, BBQ area, a recreation area next to the pool & lush greens in the back of the building.

Listed by **Pan Pacific Realty, LLC.**



HAWAII LIFE

Statewide Customer Support
Offices on All Islands

HawaiiLife.com

(800) 667-5028 call or text

re@HawaiiLife.com email support