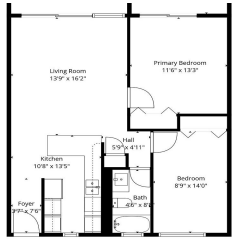




HiCentralMLS



Total: 752 sq. ft.  
 141 sq. ft. Excluded Areas  
 Excluded Areas: Balcony: 140 sq. ft., Walk: 63 sq. ft.



# 1420 Victoria Street 1504

Condo for Sale in Metro, Oahu | MLS 202604289

**774** sqft living  
**2** bedrooms  
**1** bathrooms  
**\$130,000** listing price

PRICE REDUCED! Recently upgraded furnished condo like a model home. Beautiful, tall white kitchen cabinets, nice appliances - including washer (new)/dryer in unit and dishwasher. Neutral decor and new luxury vinyl plank flooring. Enjoy the amazing 15th floor views of the mountains, Honolulu, and the Pacific. The covered lanai is the width of the condo with relaxation area and outdoor dining. Great value. It is a leasehold property and the lease expires in 2049. Everything is included! Curated local artwork, lovely leather living room furniture,

Listed by **RE/MAX Honolulu**



**HAWAI'I LIFE**

Statewide Customer Support  
 Offices on All Islands

**HawaiiLife.com**

**(800) 667-5028** call or text

**re@HawaiiLife.com** email support