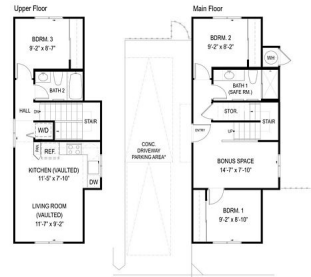




HiCentralMLS



91-3525 Kamalielea Street 16

House for Sale in **Ewoplain**, Oahu | MLS **202605323**

959 sqft living **3** bedrooms **2** bathrooms **\$768,240** listing price

Brand new community. The first phase of 'Ahakea features four, two-story floor plans of single-family detached condominium units ranging from 880 to 997 square feet of net living area. Each home has designer selected flooring packages, whole house split air conditioning and stainless steel appliances. Every residence comes with an expanded, Home Is Connected®-Smart Home system. This Gen3 plan 3 bedroom and 2 bathroom Single Family Condominium Home consists of 959 square feet (net) of living area and your own private yard area complete with

Listed by **D R Horton Hawaii, LLC**



HAWAI'I LIFE

Statewide Customer Support
Offices on All Islands

HawaiiLife.com

(800) 667-5028 call or text

re@HawaiiLife.com email support