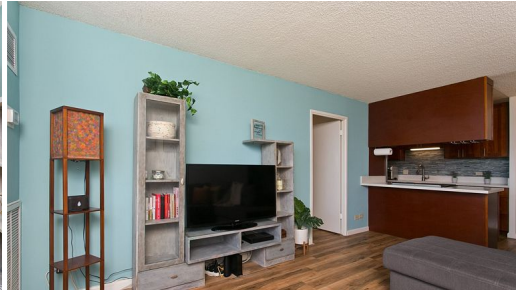




HiCentralMLS



# 3045 Ala Napuaa Place 710

Condo for Sale in **Metro**, Oahu | MLS **202606507**

**850** sqft living    **2** bedrooms    **2** bathrooms    **\$435,000** listing price

Benefit from a VA Loan Assumption with a highly favorable 2.75% interest rate (loan balance of \$265,014.70 with a monthly payment of \$1,289.76). Experience elevated island living in this spacious and beautifully remodeled 2-bedroom 2-bath home, which boasts sweeping views of Oahu's stunning South Shore, stretching from Diamond Head to West Oahu. Meal prep is a breeze in the thoughtfully upgraded kitchen with granite countertops, solid-wood cabinetry, and sleek stainless-steel appliances (new in 2020). Bathrooms have also been stylishly

Listed by **LUVA Real Estate**



## HAWAI'I LIFE

Statewide Customer Support  
Offices on All Islands

**HawaiiLife.com**

**(800) 667-5028** call or text

**re@HawaiiLife.com** email support