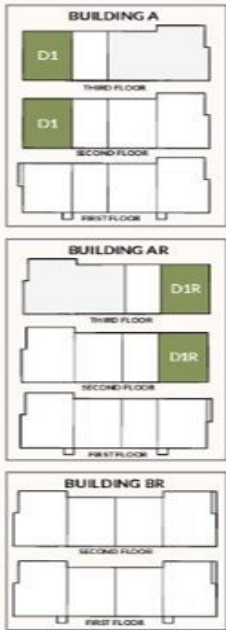




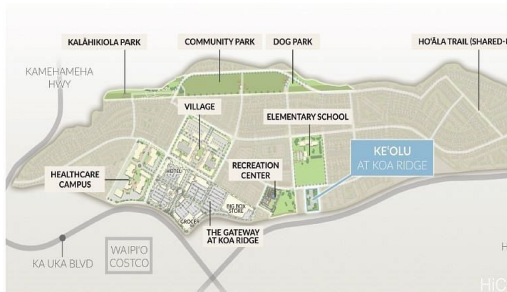
PLAN D1
2 Bedroom/2 Bath

Living Area:

764 SF



- Sheet Vinyl
- Luxury Vinyl Tile
- Carpet



94-1645 Kalanaola Drive 609

Condo for Sale in **Waipahu, Oahu** | MLS **202607706**

764 sqft living **2** bedrooms **2** bathrooms **\$571,362** listing price

Welcome to Ke'olu at Koa Ridge. Castle & Cooke's newest affordable townhome community thoughtfully designed for Hawaii families. Nestled in a highly desirable master planned neighborhood in Central Oahu this community offers both comfort and convenience. ☒

☒ This 2-bedroom 2- bath unit with 2 dedicated parking spaces offer spacious open concept living with modern comforts. Enjoy easy access to the H2 freeway and

Listed by **Castle & Cooke Homes Hawaii**



HAWAI'I LIFE

Statewide Customer Support
Offices on All Islands

HawaiiLife.com

(800) 667-5028 call or text

re@HawaiiLife.com email support