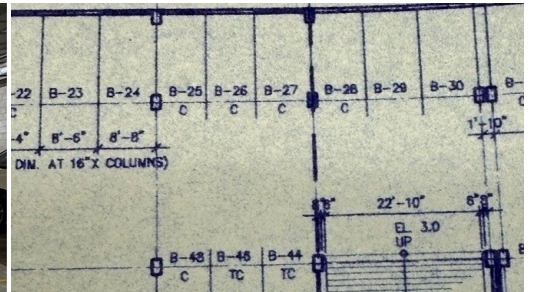
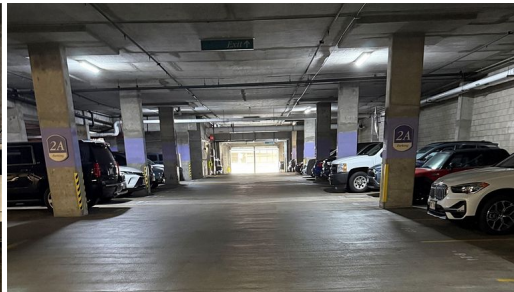


AI staged



HiCentralMLS



1330 Ala Moana Boulevard B27

Condo for Sale in **Metro**, Oahu | MLS **202609080**

\$40,000

listing price

Sale is for PARKING STALL #B-27 ONLY in the Nauru Tower Parking Structure. Compact PARKING STALL, located on B-Level, with convenient entry/exit via Waimanu Street through a secured garage door. This is a designated "commercial" PARKING STALL meaning ownership is NOT restricted to Nauru Tower resident, but preferred. Ideal for Nauru Tower owners seeking an additional stall or for those working nearby at Ala Moana/Kakaako. PARKING STALL is well-positioned near mid-level ramps and elevators for easy access.

Listed by **Locations LLC**



HAWAI'I LIFE

Statewide Customer Support
Offices on All Islands

HawaiiLife.com

(800) 667-5028 call or text

re@HawaiiLife.com email support