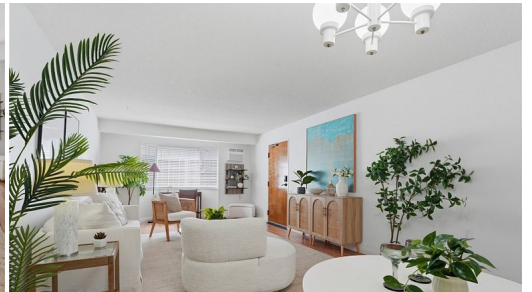




HiCentralMLS



44-106 Ikealani Drive 511

Condo for Sale in **Kaneohe**, Oahu | MLS **202609772**

975 sqft living **2** bedrooms **2** bathrooms **\$595,000** listing price

Welcome Home to this rarely available renovated ground floor corner unit in the serene Healani Gardens. Tucked away off Kaneohe Bay Drive on the border of Kailua + Kaneohe, this highly desirable pet-friendly complex is a hidden gem. Featuring lush mountain + garden views, this unit has the two nearest parking stalls, is perfectly situated in the most private and quiet section of the complex, in the smallest building with only three other units, and one of only two units in the entire complex with larger doors and no stairs, making it easily accessible for all. ☒

Listed by **Compass**



HAWAI'I LIFE

Statewide Customer Support
Offices on All Islands

HawaiiLife.com

(800) 667-5028 call or text

re@HawaiiLife.com email support