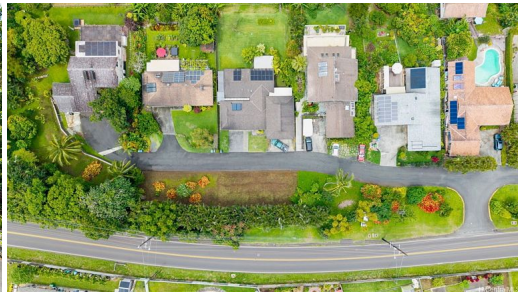




HiCentra



# 46-258 Kamehameha Highway

House for Sale in Kaneohe, Oahu | MLS 202609936

**2,781**  
sqft living

**4**  
bedrooms

**4**  
bathrooms

**\$2,600,000**  
listing price

Tucked away on a private cul-de-sac in Kaneohe, this rare island retreat offers privacy, sweeping Koʻolau mountain views, and seamless indoor-outdoor living. Set on a 15,283 sq ft lot bordering preservation land, this fully renovated 4-bedroom, 2.5-bath home blends timeless character with modern island comfort. Expanded living areas add valuable usable space beyond tax records, including enclosed lanais and a separate workshop. Buyer to conduct due diligence. The open-concept design features rustic beams, bay windows, and lush mountain

Listed by **Jeffrey Samuels Realty**



**HAWAII' LIFE**

Statewide Customer Support  
Offices on All Islands

**HawaiiLife.com**

**(800) 667-5028** call or text

**re@HawaiiLife.com** email support