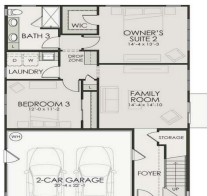


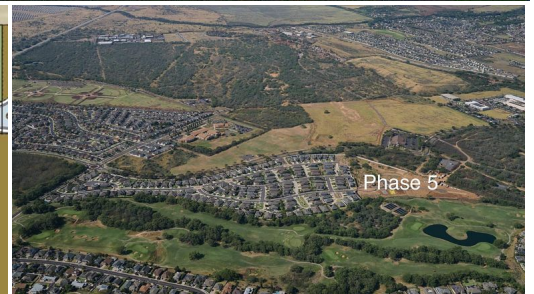


PLAN (K6)



PLAN #
UPPER LEVEL
TOTAL UPVARD
2-CAR GARAGE
UPPER PORCH
UPPER LANAI
TOTAL

1030 S.F.
1030 S.F.
2465 S.F.
471 S.F.
228 S.F.
3600 S.F.



107 Unahe Pl Lot 130-A

House for Sale in **Central**, Maui | MLS **408156**

7,065 **2,474** **4** **3** **\$1,493,325**
sqft land sqft living bedrooms bathrooms listing price

WELCOME HOME! This BRAND-NEW home is located in a highly desirable new community, The Parkways at Maui Lani-Phase 5. This is our final phase. Conveniently located in the Maui Lani Master Planned Community. The community has close proximity to many walking & hiking trails, medical facilities, the airport, shopping, beaches and schools because of its central location. This brand-new floor plan is a split level, K6 floor plan is a very spacious 4 bedroom, 3 bath home with approximately 2,474 s.f. of living space. All homes within this

Listed by **Towne Island Homes, Ltd**



HAWAII LIFE

Statewide Customer Support
Offices on All Islands

HawaiiLife.com

(800) 667-5028 call or text

re@HawaiiLife.com email support