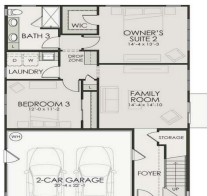


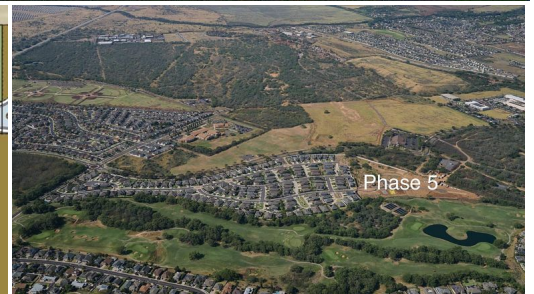


## PLAN (K6)



PLAN #  
UPPER LEVEL  
TOTAL UPVARD  
2-CAR GARAGE  
UPPER PORCH  
UPPER LANAI  
TOTAL

1030 S.F.  
1030 S.F.  
2465 S.F.  
471 S.F.  
228 S.F.  
2694 S.F.



# 119 Unahe Pl Lot 134

House for Sale in **Central**, Maui | MLS **408591**

**7,664** **2,474** **4** **3** **\$1,486,845**  
sqft land sqft living bedrooms bathrooms listing price

WELCOME HOME! This BRAND-NEW home is located in a highly desirable new community, The Parkways at Maui Lani-Phase 5. This is our final phase. Conveniently located in the Maui Lani Master Planned Community. The community has close proximity to many walking & hiking trails, medical facilities, the airport, shopping, beaches and schools because of its central location. This brand-new floor plan is a split level, K6 floor plan is a very spacious 4 bedroom, 3 bath home with approximately 2,474 s.f. of living space. All homes within this

Listed by **Towne Island Homes, Ltd**



## HAWAII LIFE

Statewide Customer Support  
Offices on All Islands

**HawaiiLife.com**

**(800) 667-5028** call or text

**re@HawaiiLife.com** email support