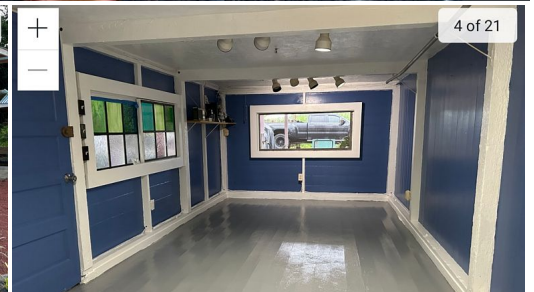




2 of 21



15-2846 PAHOA VILLAGE RD

House for Sale in **Puna**, Big Island | MLS **720963**

11,492 **2,330** **7** **4** **\$725,000**
sqft land sqft living bedrooms bathrooms listing price

Iconic redwood home build in 1920 originally 3 bedrooms 1 bath remodeled in 2022. Additional 4 studios suite all separate entry and wetbar sink including mini refrigerators. Front office suite with side commercial prep kitchen area. many Covers walkway and lanais throughout. Exterior dust to dawn lightings and security cameras. Fencing area for kids play and pets. Large open gravel driveway and parkings area. If you looking for multi-family livings arrangements or single family livings with extra rental incomes this property are fully accomodate able. Just 1

Listed by **Connection Realty Corporation**



HAWAI'I LIFE

Statewide Customer Support
Offices on All Islands

HawaiiLife.com

(800) 667-5028 call or text

re@HawaiiLife.com email support